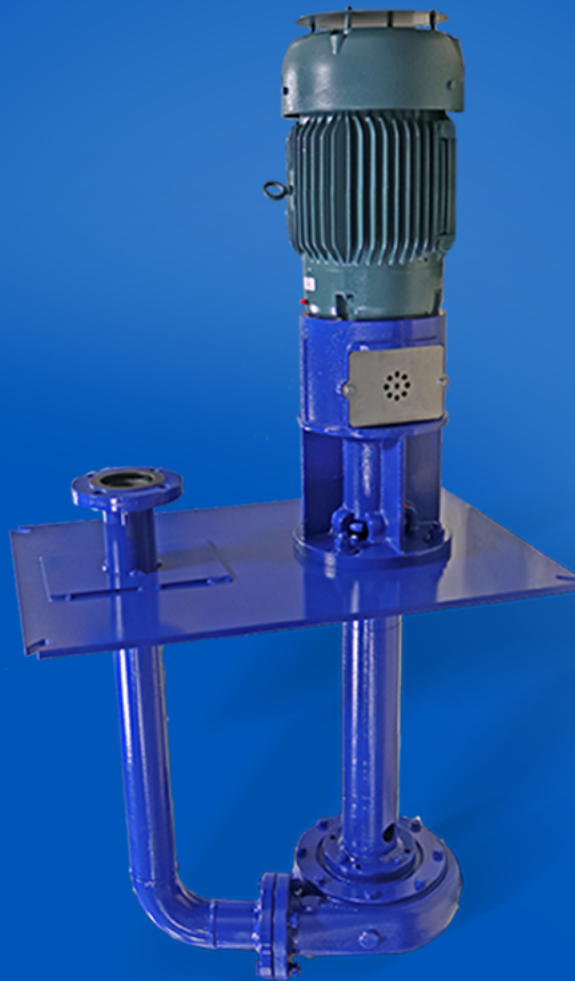




**CARVER PUMP™**

Built for purpose



**G2C**

Vertical, Cantilevered Pump



## G2C

### Our vertical cantilever pump for industrial applications.

The G2C is our vertical pump for handling fluids at moderate-to high flow rates. The design is a cantilever style that features non-wetted radial and thrust bearings located above the support plate, with a throttle bushing immediately above the impeller.

The G2C is based on the same hydraulics as our vertical sump and horizontal, end-suction pumps. For simplicity, there are only two sizes of bearing frame/motor mounting brackets for the 23 sizes. The bearing frame/motor mounting brackets are a one-piece design to ensure rigidity and alignment integrity.

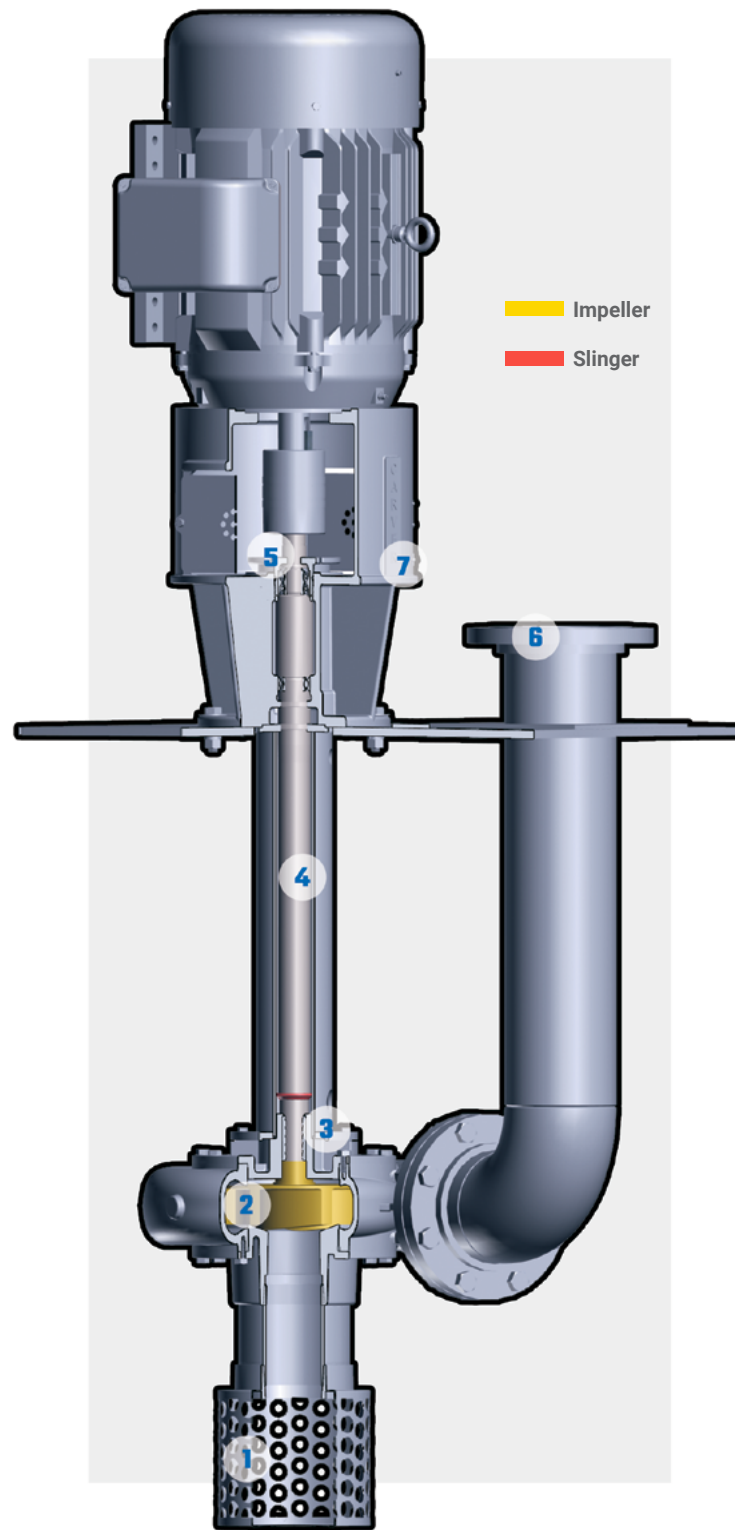
These units are typically offered in two column depths. The standard column setting has a 12-inch distance between the bottom of the mounting plate and back of the pump casing. The extended column setting is twice this length. Custom column lengths are available.

The G2C design consists of a pumping (wet) end, column, bearing frame with integrated motor mounting bracket and top plate. All models feature external impeller adjustment, bearings above the liquid surface, no mechanical seals to maintain, full compatibility with standard NEMA 'C' face motors, and some of the most efficient hydraulics in the industry.

Available as an option, discharge piping with Class 150 ANSI flange dimensions can be included (either standard or oversized) on a long support plate as required by the installation. Also available are 316 SS underliners for support plates, suction strainers, inlet tail pipe, external flush lines, and accessories such as automatic greasers and control panels with float switch actuators for automatic start/stop sequencing.



G2C



**1 STRAINER**

Optional cast alloy strainer or standard fabricated strainer

**2 IMPELLER**

High-efficiency design in cast iron or 316 SS, semi-open and enclosed available

**3 THROTTLE BUSHING**

Teflon or hardened 17-4PH stainless steel with 416 SS shaft sleeves, for longer life when pumping dirty or abrasive fluids

**4 SHAFTS**

Carbon steel or 316 SS, with optimum diameter and bearing span for minimal deflection

**5 IMPELLER ADJUSTMENT**

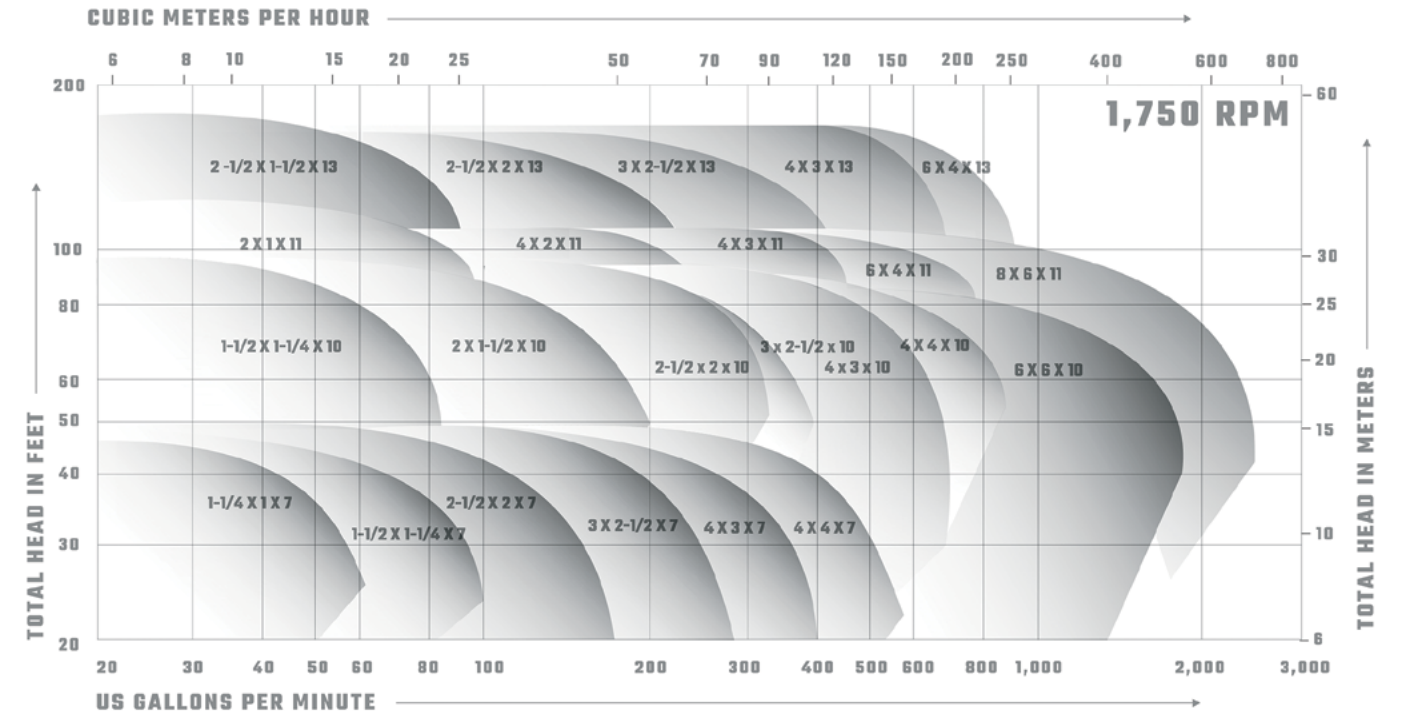
External adjusting wheel allows precise in-place adjustment of impeller-to-casing clearance, optimizing hydraulic performance over the life of the pump

**6 CONNECTIONS**

Class 150 ANSI RF discharge pipe flanges for all sizes

**7 BEARING FRAME**

Heavy-duty, thick-walled cast iron bearing frame supports bearings above the tank or pit surface



**G2C SNAPSHOT**

In the oilfields of Houston, 20 G2C pumps were installed inside earthen retention tanks. These pumps are being used to supply high-pressure pumps with water for disposal. The robust design of the G2C offers the same reliability and quality we have provided to oilfields and the US military alike, for decades.

## HYDRAULICS

- Flows to 2,500 US GPM (570 m<sup>3</sup>/hr)
- Efficiencies to 85%
- Power to 150 HP (110 KW)
- Solids to 1.250" Diameter
- Depths to 12 to 24"

## APPLICATIONS

- Commercial
- Industrial
- Marine
- Minerals & Mining
- Acids Solvents Transfer
- Coating, Surface Treatment and Spray Paint Systems
- E-Coat Systems
- Fluid Filtering
- Large Vehicle Washers
- Lube Oil Supply for Rotating Equipments
- Machine Coolant Recovery
- Molten Liquid Sulfur Transfer
- Parts Washer Circulation
- Ultra-High Purity Water Wash
- Various OEM Proprietary Systems

## WHY A G2C?

- External axial rotor adjustment allows for easy service and continued operating efficiency.
- Hardened bushing and sleeve design for pumping abrasives.
- Custom top plates available for replacement of a variety of existing equipment.
- A variety of shaft sealing options at the plate range from a standard lip seal to component or cartridge mechanical seals. Dry-running seals or double mechanical seals with a plan 52 or 53 flush can be applied, for vapor-tight operation.

## MATERIALS OF CONSTRUCTION

Casing	Cast Iron or 316 SS
Impeller	Cast Iron or 316 SS
Lineshaft Bearing	Carbon
Piping	Carbon Steel or 316 SS
Throttle Bushing	Teflon, Steel, 316 SS or 17-4PH SS
Top Plate	Carbon Steel or 316 SS
Shaft	Carbon Steel or 316 SS

Other materials available upon request.

## MECHANICAL DATA

Rotation	Counter Clockwise
Impeller Adjustment	External
Discharge Pipe Connections	Class 150 ANSI RF
Bearings	Grease Lubricated

# DISCOVER OUR PUMPS



**GH - HORIZONTAL  
END-SUCTION PUMP**



**RS - MULTISTAGE  
RING SECTION PUMP**



**API MAXUM OH2 -  
END-SUCTION PUMP**



**KWP - NON-CLOGGING  
PROCESS PUMP**



**850 - HORIZONTAL  
FILTRATE PUMP**



**MAXUM OH1- HEAVY-  
DUTY, HORIZONTAL  
END-SUCTION PUMP**



**855 - TANK-  
MOUNTED FILTRATE  
PUMP**



**RSV - VERTICAL  
IN-LINE MULTISTAGE  
PUMP**



**VLO - VERTICAL LUBE  
OIL PUMP**



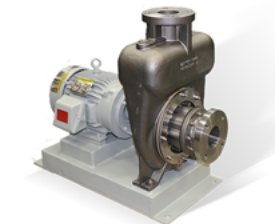
**G2C - VERTICAL  
CANTILEVER PUMP**



**G2S - VERTICAL  
SUMP PUMP**



**OH3 - VERTICAL  
IN-LINE PUMP**



**KEF - SELF PRIME  
PUMP**



**M SERIES - ASTM  
F998 CLOSE-  
COUPLED PUMP**



**DELTA P - PACKAGED  
PUMP SYSTEM**



**DELTA P - UL508A  
LISTED CONTROL  
PANELS**



## 80 years of experience

Since we built our first pumps, Carver Pump has become recognized as one of the leading centrifugal pump companies, building to the most demanding engineering specifications and military standards in the world.

We were one of the first American pump companies to attain ISO 9001 certification – the most recognized standard for quality in the world. This certification is your assurance that our commitment

to quality includes not only our hardware, but also superior customer service, leading-edge R&D, and continuous improvement in everything we do.

So whether the job is refueling fighter jets on the deck of an aircraft carrier, supplying paint to an auto assembly line, or bringing water to the fountain in a city park, we put our reputation on the line everyday with every pump we build.

## Contact us

2415 Park Avenue  
Muscatine, Iowa 52761-5691  
USA

(563) 263-3410  
[sales@carverpump.com](mailto:sales@carverpump.com)  
[www.carverpump.com](http://www.carverpump.com)